

# PRODUCT INFORMATION PACKET



Model No: AF2B30T61Y  
Catalog No: LM32813  
..30HP..3600RPM.286T.TEFC.230/460V.3PH.60HZ.CONT.40C..RIGID.....  
Totally Enclosed Fan Cooled (TEFC)



Regal and Leeson are trademarks of Regal Beloit Corporation or one of its affiliated companies.  
©2018 Regal Beloit Corporation, All Rights Reserved. MC017097E



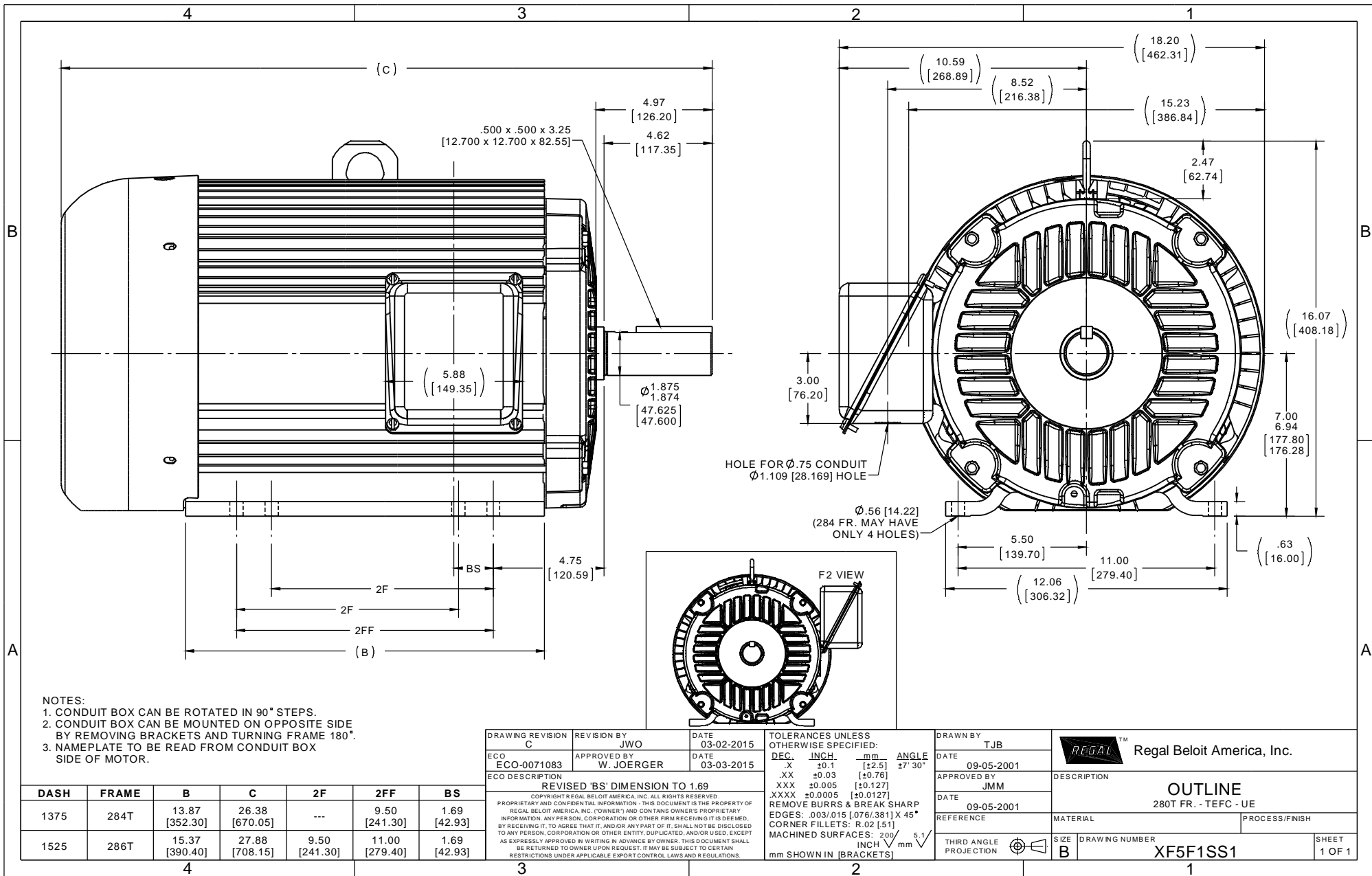


### Nameplate Specifications

Output HP	<b>30 Hp</b>	Output KW	<b>22.4 kW</b>
Frequency	<b>60 Hz</b>	Voltage	<b>230/460 V</b>
Current	<b>66.0/33.0 A</b>	Speed	<b>3525 rpm</b>
Service Factor	<b>1.25</b>	Phase	<b>3</b>
Efficiency	<b>92.4 %</b>	Duty	<b>Continuous</b>
Insulation Class	<b>F</b>	Design Code	<b>B</b>
KVA Code	<b>G</b>	Frame	<b>286T</b>
Enclosure	<b>Totally Enclosed Fan Cooled</b>	Overload Protector	<b>No</b>
Ambient Temperature	<b>40 °C</b>	Drive End Bearing Size	<b>312</b>
Opp Drive End Bearing Size	<b>209</b>	UL	<b>Recognized</b>
CSA	<b>Y</b>	CE	<b>Y</b>
IP Code	<b>43</b>		

### Technical Specifications

Electrical Type	<b>Squirrel Cage Induction Run</b>	Starting Method	<b>Wye Start Delta Run</b>
Poles	<b>2</b>	Rotation	<b>Reversible</b>
Mounting	<b>Rigid base</b>	Motor Orientation	<b>HORIZONTAL</b>
Drive End Bearing	<b>BALL</b>	Opp Drive End Bearing	<b>BALL</b>
Frame Material	<b>Aluminum</b>	Shaft Type	<b>T</b>
Overall Length	<b>28.12 in</b>	Frame Length	<b>15.25 in</b>
Shaft Diameter	<b>1.875 in</b>	Shaft Extension	<b>4.62 in</b>
Assembly/Box Mounting	<b>F1/F2 CAPABLE</b>		
Outline Drawing	<b>XF5F1SS1-1525</b>	Connection Diagram	<b>3A217-15</b>



NOTES:  
 1. CONDUIT BOX CAN BE ROTATED IN 90° STEPS.  
 2. CONDUIT BOX CAN BE MOUNTED ON OPPOSITE SIDE BY REMOVING BRACKETS AND TURNING FRAME 180°.  
 3. NAMEPLATE TO BE READ FROM CONDUIT BOX SIDE OF MOTOR.

DASH	FRAME	B	C	2F	2FF	BS
1375	284T	13.87 [352.30]	26.38 [670.05]	---	9.50 [241.30]	1.69 [42.93]
1525	286T	15.37 [390.40]	27.88 [708.15]	9.50 [241.30]	11.00 [279.40]	1.69 [42.93]

DRAWING REVISION C	REVISION BY JWO	DATE 03-02-2015
ECO ECO-0071083	APPROVED BY W. JOERGER	DATE 03-03-2015
ECO DESCRIPTION REVISED 'BS' DIMENSION TO 1.69		
<small>COPYRIGHT © REGAL BELOIT AMERICA, INC. ALL RIGHTS RESERVED.                  PROPRIETARY AND CONFIDENTIAL INFORMATION - THIS DOCUMENT IS THE PROPERTY OF                  REGAL BELOIT AMERICA, INC. (OWNER) AND CONTAINS OWNER'S PROPRIETARY                  INFORMATION. ANY PERSON, CORPORATION OR OTHER FIRM RECEIVING IT IS DEEMED,                  BY RECEIVING IT, TO AGREE THAT IT, AND/OR ANY PART OF IT, SHALL NOT BE DISCLOSED                  TO ANY PERSON, CORPORATION OR OTHER ENTITY, DUPLICATED, AND/OR USED, EXCEPT                  AS EXPRESSLY APPROVED IN WRITING IN ADVANCE BY OWNER. THIS DOCUMENT SHALL                  BE RETURNED TO OWNER UPON REQUEST. IT MAY BE SUBJECT TO CERTAIN                  RESTRICTIONS UNDER APPLICABLE EXPORT CONTROL LAWS AND REGULATIONS.</small>		

TOLERANCES UNLESS OTHERWISE SPECIFIED:			
DEC.	INCH.	mm	ANGLE
.X	±0.1	[±2.5]	27° 30'
.XX	±0.03	[±0.76]	
.XXX	±0.005	[±0.127]	
.XXXX	±0.0005	[±0.0127]	
REMOVE BURRS & BREAK SHARP EDGES: .003/.015 [0.076/.381] X 45°			
CORNER FILLETS: R.02 [51]			
MACHINED SURFACES: 200 INCH 5.1 mm SHOWN IN [BRACKETS]			

DRAWN BY TJB	Regal Beloit America, Inc.	
DATE 09-05-2001	DESCRIPTION <b>OUTLINE</b> 280T FR. - TEFC - UE	
APPROVED BY JMM	MATERIAL	PROCESS/FINISH
DATE 09-05-2001		
REFERENCE	SIZE B	DRAWING NUMBER XF5F1SS1
THIRD ANGLE PROJECTION		SHEET 1 OF 1

Data Sheet

Date: 1/31/2018

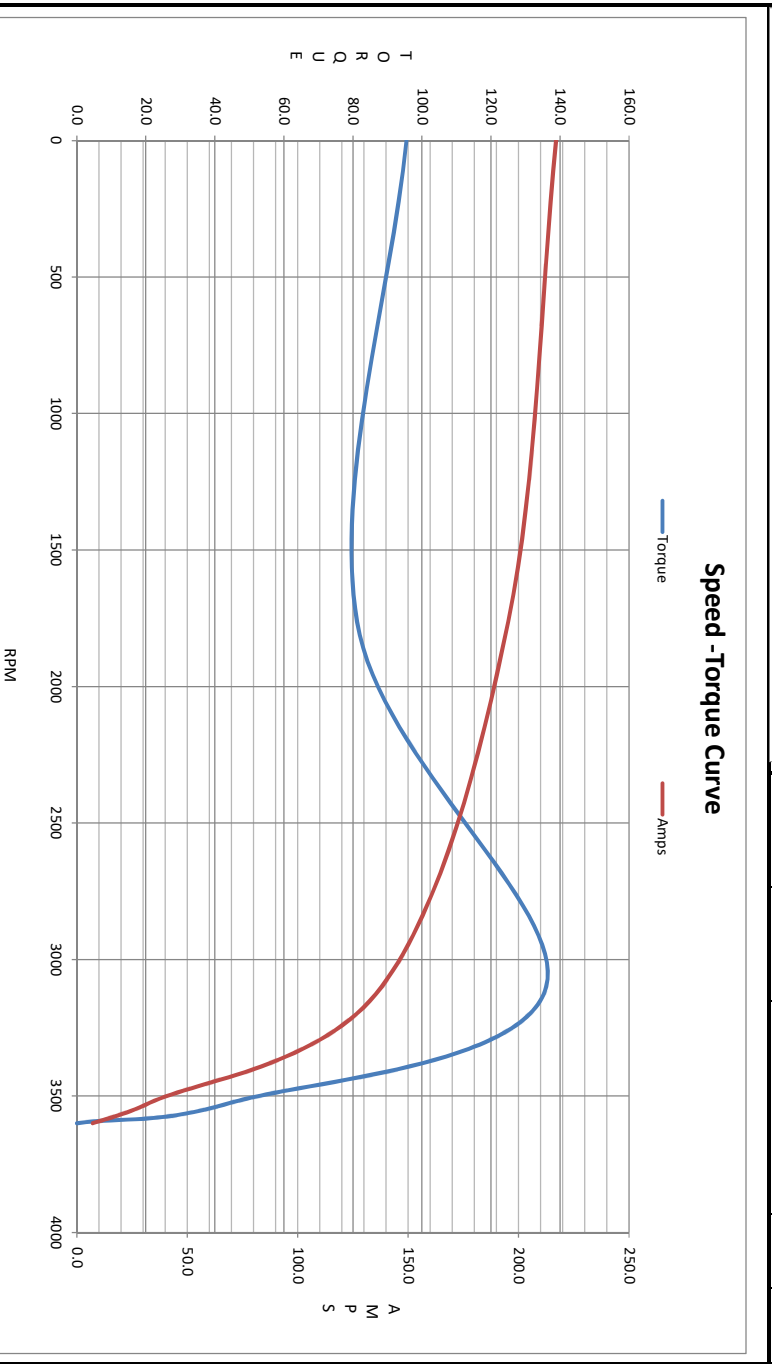
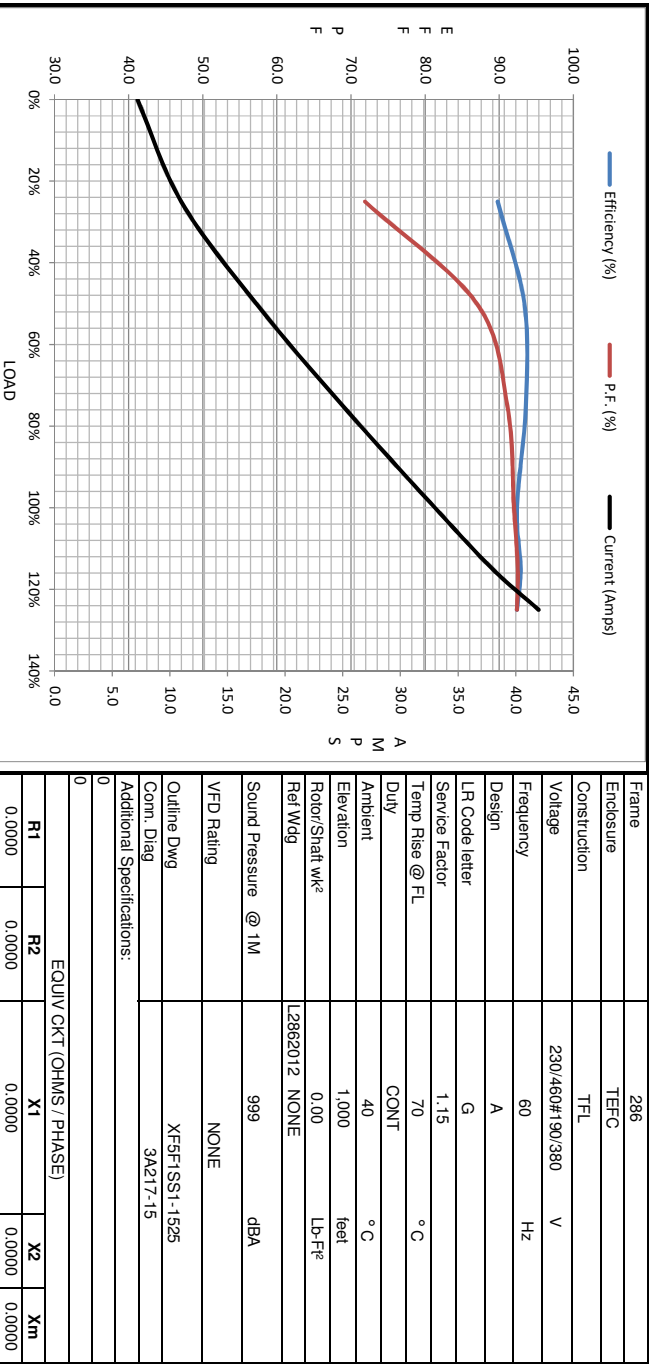
LM32813



Data @ 460 V

Motor Load Data								
Load	0%	25%	50%	75%	100%	115%	125%	LR
Current (Amps)	7.2	11.0	17.5	25.0	33.0	38.0	42.0	217
Torque (ft-lb)	0.00	11.0	22.1	33.4	44.6	51.5	56.2	95.5
RPM	3600	3583	3566	3546	3525	3515	3505	0
Efficiency (%)		89.8	93.4	93.4	92.4	92.9	92.4	
P.F. (%)	8.0	71.9	87.0	91.1	92.0	92.5	92.4	37.5

Motor Speed Data						Information Block																					
LR	Pull-Up	BD	Rated	Idle		HP	Sync. RPM	Frame	Enclosure	Construction	Voltage	Frequency	Design	LR Code letter	Service Factor	Temp Rise @ FL	Duty	Ambient	Elevation	Rotor/Shaft wk <sup>2</sup>	Ref Wdg	Sound Pressure @ 1M	VFD Rating	Outline Dwg	Conn. Diag	Additional Specifications:	
Speed (RPM)	0	1763	3100	3525	3600	30.0	3600	286	TEFC	TFL	230/460#190/380	60	A	G	1.15	70	CONT	40	1,000	0.00	NONE	999	NONE	XF5F1SS1-1525	3A217-15		
Current (Amps)	217	195	138	33.0	7.2																						
Torque (ft-lb)	95.5	81.2	136	44.6	0.00																						



EQUIV CKT (OHMS / PHASE)			
R1	R2	X1	Xm
0.0000	0.0000	0.0000	0.0000